

Red House® Slim Fit Pinpoint Oxford Non-Iron Shirt. RH620



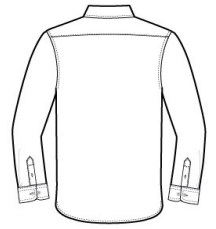
For those who prefer a slim (but not tight) fit that sits closer to the body. Crafted from 3.8-ounce, 100% cotton, this elegant pinpoint oxford has a wrinkle-resistant finish so you always look your best; no iron required. Details like pucker-free taped seams, rounded adjustable cuffs, RH engraved buttons and a shirttail hem complement the sharp look. Open collar with removable stays.

CARE INSTRUCTIONS

Machine wash warm with like colors, only non-chlorine bleach if needed, tumble dry low, remove promptly & hang, warm iron if needed.

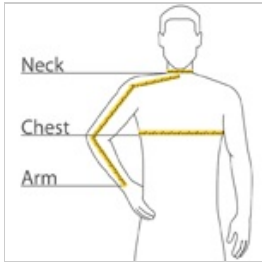


front



back

HOW TO MEASURE



CHEST WIDTH

Measure under the arm and around the fullest part of the chest with arms down, keeping tape horizontal.

NECK

Measure around the fullest part of the neck at the base.

ARM

Place hand on hip. Start at the center of the back of the neck and measure across the shoulder, to the elbow, and then down to the wrist.

SIZE CHART

	XS	XS	S	S	M	M	L	L	XL	XL	2XL
Chest	32-34	32-34	35-37	35-37	38-40	38-40	41-43	41-43	44-46	44-46	47-49
Neck	14 1/2 - 15	14 1/2 - 15	15 - 15 1/2	15 - 15 1/2	15 1/2 - 16	15 1/2 - 16	16 - 16 1/2	16 - 16 1/2	16 1/2 - 17	16 1/2 - 17	17 - 17 1/2
Arm	30 1/2	30 1/2	32	32	34	34	35	35	36 1/2	36 1/2	37 1/2

COLOR INFORMATION



Blue
PMS 2134C



Charcoal
PMS COOL GREY
11C



Ivory Chiffon



Vintage Navy
PMS 2374C



White
PMS WHITE