

**Port & Company® Youth Fan Favorite Fleece
Pullover Hooded Sweatshirt. PC850YH**

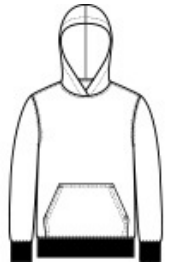


You'll be the biggest fan of this smooth-faced fleece.

- 8.5-ounce, 80/20 ring spun cotton/poly
- 78/22 ring spun cotton/poly (Athletic Heather)
- 50/50 ring spun cotton/poly (Dark Heather Grey)
- 100% ring spun cotton face (except Athletic Heather and Dark Heather Grey)
- Removable tag for comfort and relabeling
- Locker patch
- Twill-taped neck
- Front pouch pocket
- No drawcord at hood
- Ideal for direct to garment (DTG) printing

CARE INSTRUCTIONS

Machine wash cold. Inside out with like colors. Only non-chlorine bleach when needed. Tumble dry low. Do not iron.



front



back

HOW TO MEASURE



CHEST WIDTH

Measure under the arm and around the fullest part of the chest with arms down, keeping tape horizontal.

SIZE CHART

	XS	S	M	L	XL
Size	4	6/8	10/12	14/16	18/20
Chest	25-26	26-28	28-30	30-32	32-35

COLOR INFORMATION



Athletic Heather
PMS COOL GRAY
7C



Bright Red
PMS 186C



Charcoal
PMS COOL GRAY
11C



Dark Heather Grey
PMS 7540C



Jet Black
PMS NTR BLACK
C



Team Navy
PMS 2766C



True Royal
PMS 7687C



White