



DISCONTINUED Sport-Tek® Ladies Tech Fleece Hooded Sweatshirt. LST250



Snag-resistant and pill-resistant with a matte finish, the double-knit construction enhances breathability and moisture wicking, while a Graphite mesh hood lining and two-tone drawcord add an athletic edge.

- 100% polyester
- Gently contoured silhouette
- Three-panel hood
- Two-tone, textured drawcords
- Closed-hole Graphite mesh hood lining
- Taped neck
- Raglan sleeves
- Integrated front pouch pocket
- Elongated rib knit cuffs and hem

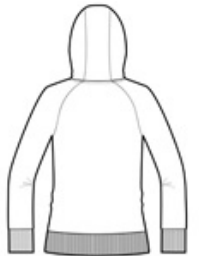
Due to the nature of 100% polyester performance fabrics, special care must be taken throughout the printing process.

CARE INSTRUCTIONS

Machine wash cold. Do not bleach. Tumble dry low. Remove promptly. Warm iron if necessary.

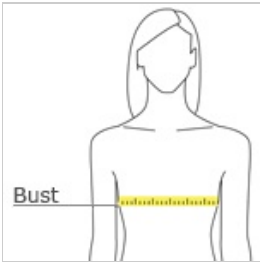


front



back

HOW TO MEASURE



BUST

Measure under the arm and around the fullest part of the bust with arms down, keeping tape horizontal.

SIZE CHART

	XS	S	M	L	XL	XXL	3XL	4XL
Size	2	4/6	8/10	12/14	16/18	20/22	24/26	28/30
Bust	32-34	35-36	37-38	39-41	42-44	45-47	48-51	52-55

COLOR INFORMATION