



DISCONTINUED Sport-Tek® Ladies 5-in-1 Performance Straight Leg Warm-Up Pant. LP712



Choose functionality with our coordinating jackets and pants that offer 5-in-1 performance: repel odor, resist static, repel water, repel oil and resist stains. With relaxed athletic styling and whisper-quiet wear—these pants are a workout essential.

- 100% polyester outer shell
- Full mesh lining with nylon at cuffs for easy on/off
- Elastic waistband with drawcord
- Two front pockets, one back pocket
- Extended leg zippers
- Mesh lining above knees, nylon lining below for easy on/off

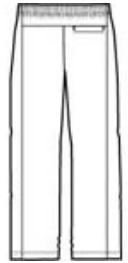
CARE INSTRUCTIONS

Machine wash cold with like colors. Do not bleach. Tumble dry low. Warm iron if necessary. Do not use fabric softeners.

[Tips For Effectively Screen Printing Polyester Fabrics](#)

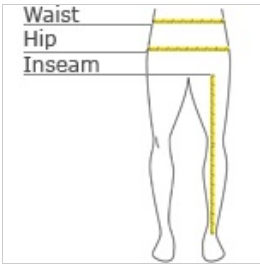


front



back

HOW TO MEASURE



WAIST

Measure around the smallest part of the natural waist.

HIPS

With feet together, measure around the fullest part of hips, keep tape horizontal.

INSEAM

Measure a similar style pant that fits well and is the desired length. Measure from the crotch seam to the hem.

SIZE CHART

	L	S	M
Size	12/14	4/6	8/10
Waist	31-33	27-28	29-30
Hip	39-41	35-36	37-38

COLOR INFORMATION