

DISCONTINUED Port Authority® Ladies Patch Pockets Denim Shirt. L652



We've taken an all-time favorite and given it modern details like double chest pockets and double-needle stitching for extra durability. This versatile shirt can easily be dressed up or down for a variety of looks.

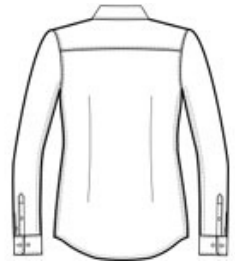
- 6.2-ounce, 100% cotton
- Bust and back darts
- Front princess seams
- Double-needle stitching on placket, collar, front and back yokes and cuffs
- Open collar
- Faux horn buttons
- Patch pockets
- Adjustable cuffs with button-through sleeve plackets
- Slight shirttail hem

CARE INSTRUCTIONS

Machine Wash Cold. Use only non-chlorine bleach. Tumble dry low.



front



back

HOW TO MEASURE



BUST

Measure under the arm and around the fullest part of the bust with arms down, keeping tape horizontal.

ARM

Place hand on hip. Start at the center of the back of the neck and measure across the shoulder, to the elbow, and then down to the wrist.

SIZE CHART

	XS	S	M	L	XL	4XL
Size	2	4/6	8/10	12/14	16/18	28/30
Bust	32-34	35-36	37-38	39-41	42-44	52-55
Arm	30 - 30 3/4	30 3/4 - 31 1/2	31 1/2 - 32	32 - 32 1/2	32 1/2 - 33	33 3/4 - 34 1/2

COLOR INFORMATION