

**Port Authority® Cascade Waterproof Jacket.  
J322**



For those days when the rain just won't stop. Our Cascade Waterproof Jacket is fully seam-sealed with waterproof zippers. This parka-length essential has modern good looks thanks to its trend-right colors, contrast zippers and colorblocking.

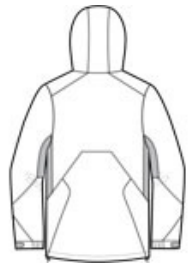
- 100% nylon shell
- 3000MM fabric waterproof rating
- Waterproof zippered chest pocket
- Waterproof front zippered pockets
- Hood with drawcord and toggles for adjustability
- Full-length exterior storm flap with snaps and hook and loop closure
- Two-way Vislon zipper
- Port Pocket™ for easy embroidery access
- Self-fabric adjustable tab cuffs with hook and loop closures
- Open hem with drawcord and toggles for adjustability

**CARE INSTRUCTIONS**

Machine wash cold with like colors. Gentle cycle. Tumble dry low. Cool iron if needed. Do not dry clean. Do not bleach.



front



back

**HOW TO MEASURE**



**CHEST WIDTH**

Measure under the arm and around the fullest part of the chest with arms down, keeping tape horizontal.

**SIZE CHART**

	XS	S	M	L	XL	2XL	3XL	4XL
Chest	32-34	35-37	38-40	41-43	44-46	47-49	50-53	54-57

**COLOR INFORMATION**



Black/ Magnet



Imperial Blue/  
Black  
PMS 7691 C