



Carhartt® Midweight Hooded Zip-Front Sweatshirt. CTK122



Carhartt's Midweight Hooded Zip-Front Sweatshirt brings considerable comfort to cool-weather worksites.

- 10.5-ounce, 50/50 cotton/poly blend or 59/41 cotton/poly blend (Black, Carbon Heather, Moss, New Navy)*
- 50/50 cotton/poly blend (Brite Lime, Brite Orange)
- 70/30 cotton/poly blend (Heather Grey)
- Attached three-piece hood with drawcord closure
- Full-length brass front zipper
- Two front hand warmer pockets
- Stretchable, spandex-reinforced, rib knit cuffs and waistband
- Carhartt-strong, triple-stitching on pocket
- Carhartt label sewn on left hand warmer pocket
- Loose fit

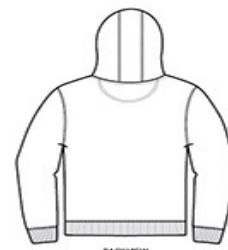
*Please note: Select colors in Carhartt fleece are currently transitioning from a 50/50 cotton/poly blend to a 59/41 cotton/poly blend. Weight and fabric properties remain the same. Your order may contain a combination of both fabrics.

CARE INSTRUCTIONS

Machine wash cold with like colors, Do not bleach, Tumble dry low remove promptly.

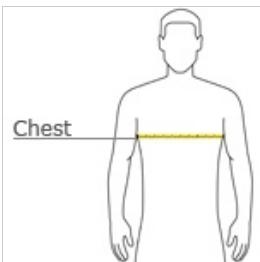


front



back

HOW TO MEASURE



CHEST WIDTH

Measure under the arm and around the fullest part of the chest with arms down, keeping tape horizontal.

SIZE CHART

	S	S	M	M	L	L	XL	XL	2XL	2XL	3XL	3XL	4XL	4XL
Chest	34-36	34-36	38-40	38-40	42-44	42-44	46-48	46-48	50-52	50-52	54-56	54-56	58-60	58-60

COLOR INFORMATION



Black
PMS BLACK C



Brite Lime
PMS NO MATCH



Brite Orange
PMS NO MATCH



Carbon Heather
PMS 7540C



Heather Grey
PMS COOL GREY
6C



Moss
PMS 7770C



New Navy
PMS 533C